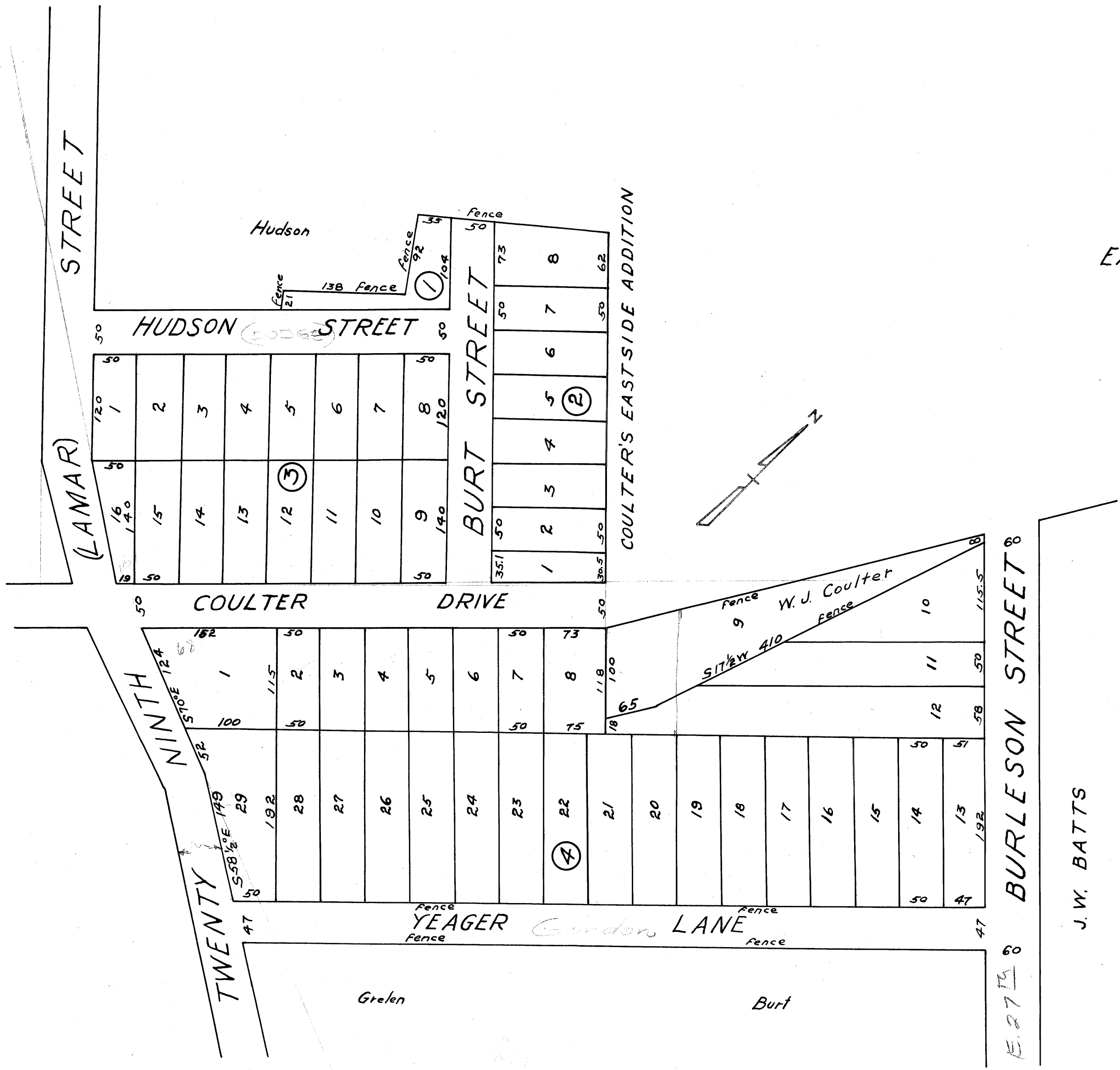


on books 1/17/03
WD



~~(COULTER)~~
 EASTSIDE RE-SURVEY ADDITION
 TO
 THE CITY OF BRYAN
 Vol. 96 Page 466 May 25, 1938
 SCALE 1" = 100'

2/25/38

J. W. BATTS

E. 27 1/2 80 BURLESON STREET 8